

## SUBMITTAL DATA: MFZ-KJ15NA-U1 & MUFZ-KJ15NAHZ-U1

### 15,000 BTU/H FLOOR-MOUNTED HEAT PUMP SYSTEM

Job Name:	Location:	Date:
Purchaser:	Engineer:	
Submitted to:	For <input type="checkbox"/> Reference <input type="checkbox"/> Approval <input type="checkbox"/> Construction	
System Designation:	Schedule No.:	

#### GENERAL FEATURES

- Floor-standing unit
- Standard Hybrid Catechin Prefilter filter included within indoor unit
- Quiet operation
- Choice of fan speeds: Low, Medium, High, and Super High; Auto fan speed control also included
- Bottom supply outlet operates in heat mode
- Wireless remote controller is included; PAR-40MAA wired remote controller can be installed as an option
- Indoor unit powered from outdoor unit using A-Control
- Auto restart following a power outage
- Unit can be recessed mounted into wall

#### Controls

- ☐ Wireless Controller (MHK2)
- ☐ Wired Remote Controller PAR-40MAA (Requires MAC-333IF-E)
- ☐ Thermostat Interface (PAC-US444CN-1)

Windscreens (ME-FR-24)

#### SPECIFICATIONS:

Rated Conditions (Capacity / Input)		
Cooling <sup>1</sup>	Btu/h / W	15,000 / 1,120
Heating at 47°F <sup>2</sup>	Btu/h / W	18,000 / 1,410

Capacity Range		Minimum	Maximum
Cooling <sup>1</sup>	Btu/h	5,300	19,000
Heating at 47°F <sup>2</sup>	Btu/h	5,700	25,000
Heating at 17°F <sup>3</sup>	Btu/h	-	20,500
Heating at 5°F <sup>4</sup>	Btu/h	-	18,000

<sup>1</sup> Cooling | Indoor: 80° F (27° C) DB / 67° F (19° C) WB; Outdoor: 95° F (35° C) DB / 75° F (24° C) WB\*  
<sup>2</sup> Heating at 47°F | Indoor: 70° F (21° C) DB / 60° F (16° C) WB; Outdoor: 47° F (8° C) DB / 43° F (6° C) WB\*  
<sup>3</sup> Heating at 17°F | Indoor: 70° F (21° C) DB / 60° F (16° C) WB; Outdoor: 17° F (-8° C) DB / 15° F (-9° C) WB\*  
<sup>4</sup> Heating at 5°F | Indoor: 70° F (21° C) DB / 60° F (16° C) WB; Outdoor: 5° F (-15° C) DB / 5° F (-15° C) WB\*  
 \* Rating Conditions per AHRI Standard:

Operating Conditions (Indoor Intake Air Temp.) (Max. / Min.)	
Cooling <sup>5</sup>	90° F (32° C) DB / 67° F (19° C) DB
Heating	80° F (27° C) DB / 70° F (21° C) DB

Operating Conditions (Outdoor Intake Air Temp.) (Max. / Min.)	
Cooling <sup>5</sup>	115 F (46° C) DB / 14° F (-10° C) DB
Heating	75° F (24° C) DB / -14° F (-25° C) DB**

<sup>5</sup> Applications should be restricted to comfort cooling only; equipment cooling applications are not recommended for low ambient temperature conditions.  
 \*\* System cuts out at -18° F (-28° C) to avoid thermistor error and automatically restarts at -4° F (-20° C).

AHRI Efficiency Ratings		
SEER (SEER2) / EER (EER2) / HSPF (HSPF2)		21.8 (22.2) / 13.5 (13.5) / 11.6 (10.7)
COP at 47°F 17°F		3.7 / 2.71
Electrical		
Electrical Power Requirements		208 / 230V, 1-Phase, 60 Hz
MCA: Indoor   Outdoor *	A	1   16
Recommended Fuse/ Breaker Size	A	20

Should this document be altered or changed without MESCA's permission, it becomes null and void. MESCA assumes no responsibility for any consequences in such cases.

Specifications are subject to change without notice.



MFZ-KJ15NA-U1



MUFZ-KJ15NAHZ-U1



Wireless Remote Controller

Indoor Unit		
Blower Motor ECM   Output		0.62 F.L.A.   30 W
SHF   Moisture Removal		0.66 / 3.9 pt./h
Field Drainpipe Size O.D.	In.(mm)	5/8 (15)
Outdoor Unit		
Compressor		DC INVERTER-driven Twin Rotary
Fan Motor (ECM)	F.L.A.	0.93

Airflow Rate (Quiet - Lo - Med - Hi - Super Hi)			
Indoor (Cooling)	DRY	CFM	198-254-311-392-431
	WET		168-216-264-333-366
Indoor (Heating)	DRY	CFM	212-268-328-399-470
Outdoor			1,653 / 1,730

Sound Pressure Level (Quiet - Lo - Med - Hi - Super Hi)		
Indoor: Cooling   Heating	dB(A)	28-33-38-43-47   29-35-40-45-49
Outdoor: Cooling   Heating		51   55

Unit Dimensions		
Indoor   Outdoor (H x W x D)	In.	23-5/8 x 29-17/32 x 8-15/32 34-5/8 x 33-1/16 x 13
	mm	600 x 750 x 215   880 x 840 x 330

Unit/Package Weight		
Unit: Indoor   Outdoor	Lbs.(kg)	33 (15)   124 (56)
Package: Indoor   Outdoor	Lbs.(kg)	41 (18.5)   144 (65)

External Finish	
Indoor   Outdoor	Munsell 1.0Y 9.2 / 0.2   Munsell No. 3Y 7.8 / 1.1

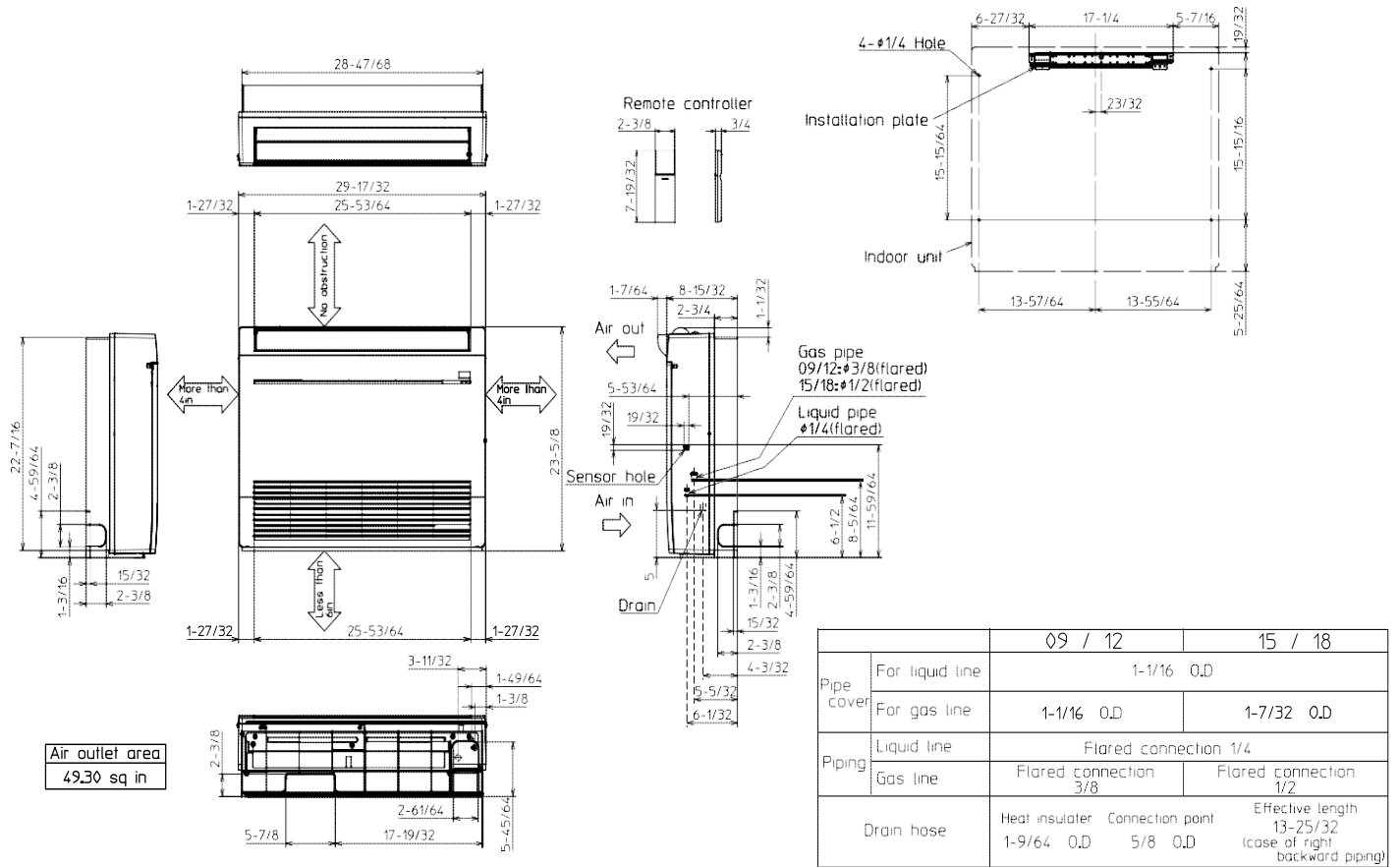
Refrigerant	R410A; 3 lb. 5 oz.
-------------	--------------------

Refrigerant Piping(Flared)		
Liquid (High Pressure)	In.(mm)	1/4 (6.35)
Gas (Low Pressure)		1/2 (12.7)
Max. Total Refrigerant Pipe Length (Height Diff.)	Ft. (m)	50 (15)
Max. Total Refrigerant Pipe Length (Length.)		100 (30)

# DIMENSIONS: INDOOR UNIT-MFZ-KJ15NA-U1

## MFZ-KJ15NA-U1

Unit: in.



Should this document be altered or changed without MESCA's permission, it becomes null and void. MESCA assumes no responsibility for any consequences in such cases.

### Notes:

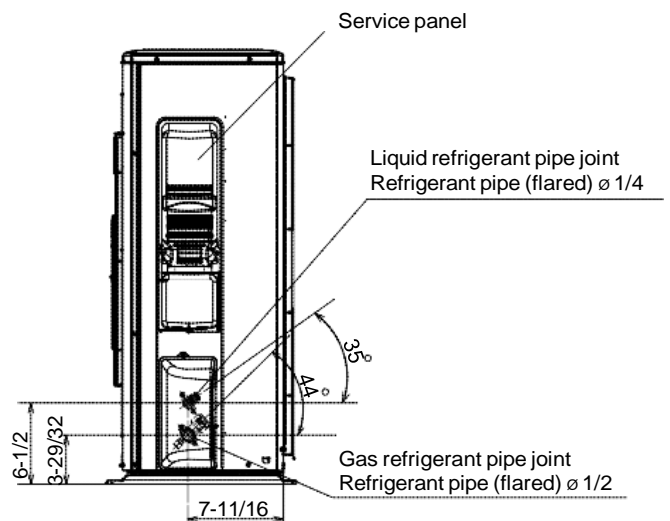
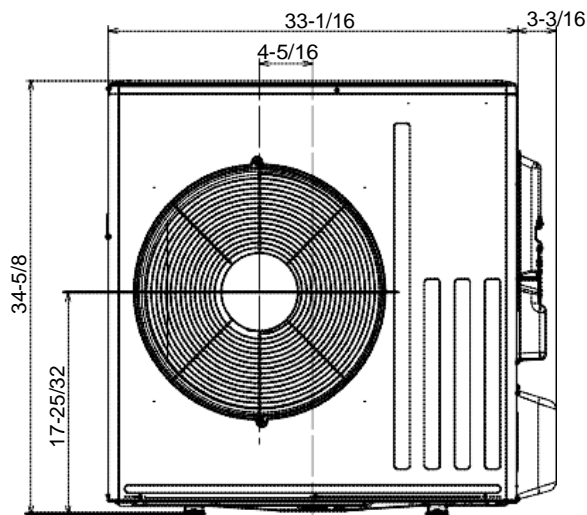
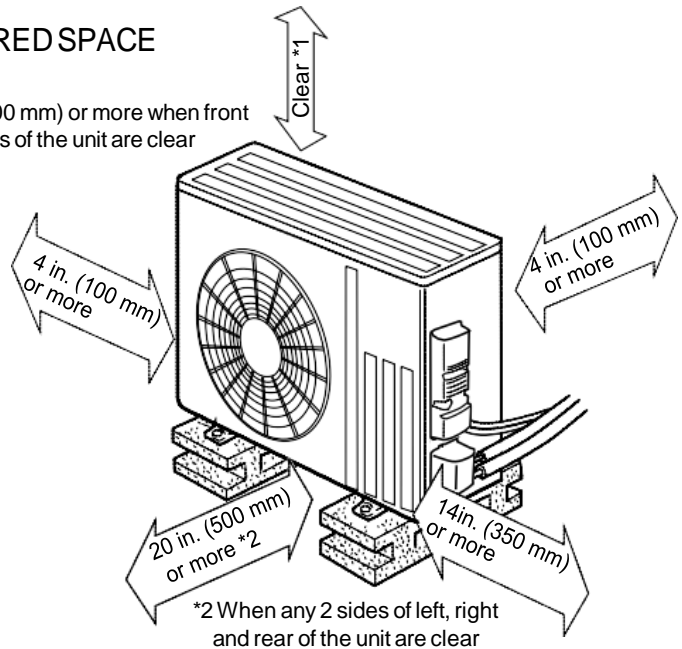
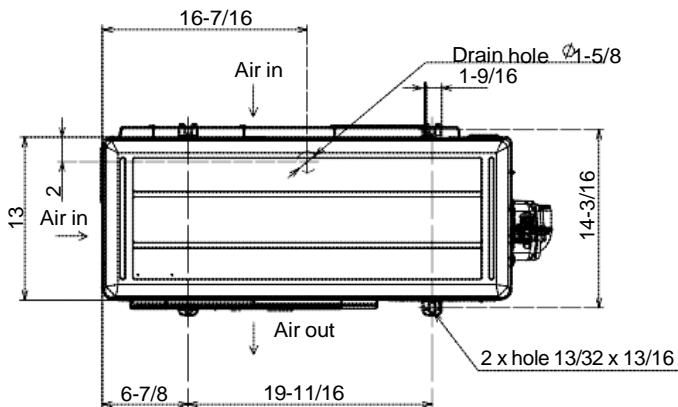
# DIMENSIONS: OUTDOOR UNIT- MUFZ-KJ15NAHZ-U1

## MUFZ-KJ15NAHZ-U1

Unit: in. (mm)

### REQUIRED SPACE

\*1 20 in. (500 mm) or more when front and sides of the unit are clear



Should this document be altered or changed without MESCA's permission, it becomes null and void. MESCA assumes no responsibility for any consequences in such cases.

