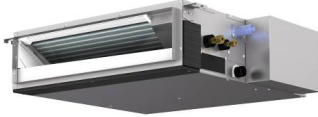


SUBMITTAL DATA: SEZ-KD15NA4R1

15,000 BTU/H HORIZONTAL-DUCTED INDOOR UNIT FOR MXZ MULTI-ZONE HEAT PUMP SYSTEM

Job Name:	Location:	Date:
Purchaser:	Engineer:	
Submitted to:	For <input type="checkbox"/> Reference <input type="checkbox"/> Approval <input type="checkbox"/> Construction	
System Designation:	Schedule No.:	


SPECIFICATIONS:

Rated Capacity*		
Cooling ¹	Btu/h / W	15,000
Heating at 47° F ²	Btu/h / W	18,000

NOTES : ¹1.Rating conditions (cooling)-Indoor : D.B. 26.7°C (80°F), W.B. 19.4°C (67°F) Outdoor : D.B. 35°C (95°F), W.B. 23.9°C (75°F)
 (heating)-Indoor : D.B. 21.1°C (70°F), W.B. 15.6°C (60°F) Outdoor : D.B. 8.3°C (47°F), W.B. 6.1°C (43°F)
²2.Rating conditions(heating)-Indoor : D.B. 21.1°C (70°F), W.B. 15.6°C (60°F) Outdoor : D.B. -8.3°C (17°F), W.B. -9.4°C (15°F)

For data on specific indoor units (all ducted, all non-ducted, and both ducted and non-ducted) combinations, see the MXZ Technical and Service Manual.

Applications should be restricted to comfort cooling only; equipment cooling applications are not recommended for low ambient temperature conditions.

ACCESSORIES:

Windscreens (ME-FR-15-17)
 External Fan/Heater Control Adapter (PAC-YU25HT-G)
 Cable connector of Remote Sensor (PAC-SA88HA-EP)*
 *Allows control of several units with multiple remote control display

Optional Controls

Wireless Controller (MHK1)
 Wired Remote Controller (PAR-403MAA)
 Simple MA Remote Controller (PAC-YT53CRAU-J)
 Thermostat Interface (PAC-US444CN-1)
 System Control Interface (MAC-334IF-E)
 Wireless Remote (PAR-FL32MA-E) (Requires PAR-FA32MA-E)
 Remote Temperature Sensor (PAC-SE41TS-E)

Electrical Power Requirements	208 / 230V, 1-Phase, 60 Hz	
-------------------------------	----------------------------	--

Minimum Circuit Ampacity (MCA) *	A	1.00
----------------------------------	---	------

Blower Motor (ECM)	F.L.A.	0.74
--------------------	--------	------

Blower Motor Output	W	96
---------------------	---	----

Moisture Removal	pt/h	1.9
------------------	------	-----

Field Drainpipe Size O.D.	In.(mm)	1-1/4 (31.75)
---------------------------	---------	---------------

Airflow Rate (Lo - Med - Hi)		
DRY	CFM	353-441-529
WET		317-396-476

Sound Pressure Level (Lo - Med - Hi)		
Cooling	dB(A)	30-34-37

External Dimensions (H x W x D)	In.(mm)	7-7/8 x 39 x 27-9/16 (200 x 990 x 700)
---------------------------------	---------	---

Net Weight	Lbs.(kg)	54 (24.5)
------------	----------	-----------

External Finish	Galvanized-steel Sheets	
-----------------	-------------------------	--

Refrigerant Piping (Flared)		
Liquid (High Pressure)	In.(mm)	1/4 (6.35)
Gas (Low Pressure)		1/2 (12.7)

