

**SUBMITTAL DATA: MSZ-GL15NA-U1 & MUZ-GL15NAH-U2**  
15,000 BTU/H WALL-MOUNTED HEAT PUMP SYSTEM

Job Name:	Location:	Date:
Purchaser:	Engineer:	
Submitted to:	For <input type="checkbox"/> Reference <input type="checkbox"/> Approval <input type="checkbox"/> Construction	
System Designation:	Schedule No.:	



Wireless Remote Controller

**ACCESSORIES:**

**Indoor Unit**

Anti-Allergy Enzyme Filter (MAC-408FT-E)

**Outdoor Unit**

Windscreens (ME-FR-12-17)

**Controls**

Wireless Controller (MHK1)

Wired Remote Controller PAR-40MAA (Requires MAC-334IF-E)

Thermostat Interface (PAC-US444CN-1)

**SPECIFICATIONS:**

Rated Conditions (Capacity / Input)		
Cooling <sup>1</sup>	Btu/h / W	14,000 / 1,080
Heating at 47° F <sup>2</sup>	Btu/h / W	18,000 / 1,600

Capacity Range		Minimum	Maximum
Cooling <sup>1</sup>	Btu/h	3,100	18,200
Heating at 47° F <sup>2</sup>	Btu/h	4,800	20,900
Heating at 17° F <sup>3</sup>	Btu/h	-	16,400
Heating at 5° F <sup>4</sup>	Btu/h	-	13,700

<sup>1</sup> Cooling | Indoor: 80° F (27° C) DB / 67° F (19° C) WB; Outdoor: 95° F (35° C) DB / 75° F (24° C) WB  
<sup>2</sup> Heating at 47° F | Indoor: 70° F (21° C) DB / 60° F (16° C) WB; Outdoor: 47° F (8° C) DB / 43° F (6° C) WB  
<sup>3</sup> Heating at 17° F | Indoor: 70° F (21° C) DB / 60° F (16° C) WB; Outdoor: 17° F (-8° C) DB / 15° F (-9° C) WB  
<sup>4</sup> Heating at 5° F | Indoor: 70° F (21° C) DB / 60° F (16° C) WB; Outdoor: 5° F (-15° C) DB / 5° F (-15° C) WB  
<sup>\*</sup> Rating Conditions per AHRI Standard:

Operating Conditions (Indoor Intake Air Temp.) (Max. / Min.)	
Cooling <sup>2</sup>	90° F (32° C) DB / 67° F (19° C) DB
Heating	80° F (27° C) DB / 70° F (21° C) DB

Operating Conditions (Outdoor Intake Air Temp.) (Max. / Min.)	
Cooling <sup>5</sup>	115 F (46° C) DB / 14° F (-10° C) DB
Heating	75° F (24° C) DB / -4° F (-20° C) DB

<sup>5</sup> Applications should be restricted to comfort cooling only; equipment cooling applications are not recommended for low ambient temperature conditions.

AHRI Efficiency Ratings	
SEER / HSPF / EER	21.6 / 10.8 / 13.0
COP at 47° F / 17° F	3.3 / 3.0

<b>Energy Star®</b>	Yes
---------------------	-----

ENERGY STAR products are third-party certified by an EPA-recognized Certification Body.

Electrical Power Requirements	208 / 230V, 1-Phase, 60 Hz	
-------------------------------	----------------------------	--

Minimum Circuit Ampacity (MCA) *		
Indoor / Outdoor (RBS)	A	1 / 10 (15A - Recommended Breaker Size)

\* All electrical work shall comply with National (CEC) and local codes and regulations.

Indoor Unit		
Blower Motor (ECM)	F.L.A.	0.76
Blower Motor Output	W	30
SHF / Moisture Removal		0.80 / 2.7 pt./h
Field Drainpipe Size O.D.	In.(mm)	5/8 (15)

Outdoor Unit		
Compressor		DC INVERTER-driven Twin Rotary
Fan Motor (ECM)	F.L.A.	0.5

Airflow Rate (Quiet - Lo - Med - Hi - Super Hi)			
Indoor (Cooling)	DRY	CFM	205-272-335-420-533
	WET		170-237-300-385-498
Indoor (Heating)	DRY		205-247-304-367-463
			1,243 / 1,229

Sound Pressure Level (Quiet - Lo - Med - Hi - Super Hi)			
Indoor	Cooling	dB(A)	26-32-38-44-49
	Heating		26-30-35-40-46
Outdoor	Cooling		49
	Heating		51

External Dimensions		
Indoor (H x W x D)	In.(mm)	11-5/8 x 31-7/16 x 9-1/8 (295 x 798 x 232)
Outdoor (H x W x D)	In.(mm)	21-5/8 x 31-1/2 x 11-1/4 (550 x 800 x 285)

Net Weight		
Indoor	Lbs.(kg)	22 (10)
Outdoor		81 (37)

External Finish	
Indoor	Munsell 1.0Y 9.2 / 0.2
Outdoor	Munsell No. 3Y 7.8 / 1.1

Refrigerant	R410A; 2 lb. 9 oz.
-------------	--------------------

Refrigerant Piping (Flared)		
Liquid (High Pressure)	In.(mm)	1/4 (6.35)
Gas (Low Pressure)		1/2 (12.7)
Max. Total Refrigerant Pipe Length (Height Diff.)	Fl. (m)	40 (12)
Max. Total Refrigerant Pipe Length (Length.)		65 (20)

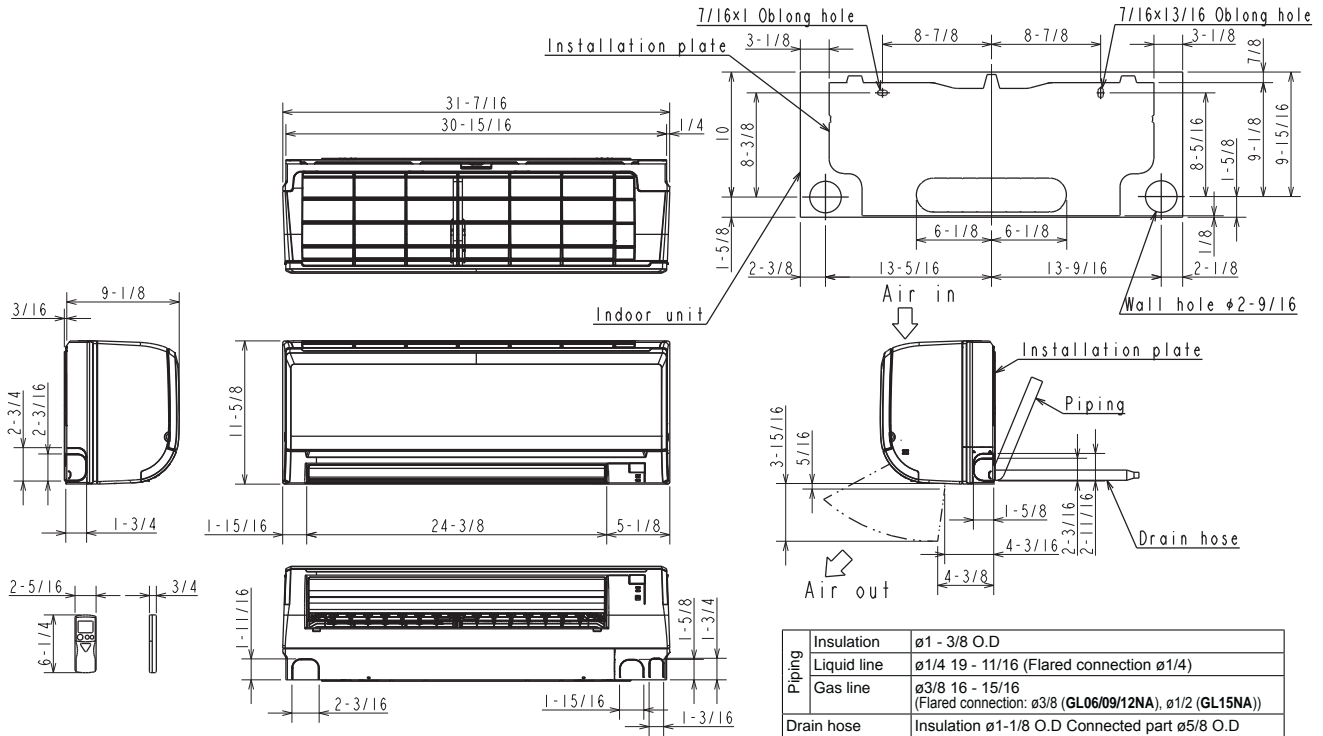
Should this document be altered or changed without MESCA's permission, it becomes null and void. MESCA assumes no responsibility for any consequences in such cases.

Specifications are subject to change without notice

# DIMENSIONS: MSZ-GL15NA-U1 & MUZ-GL15NAH-U2

## MSZ-GL15NA-U1

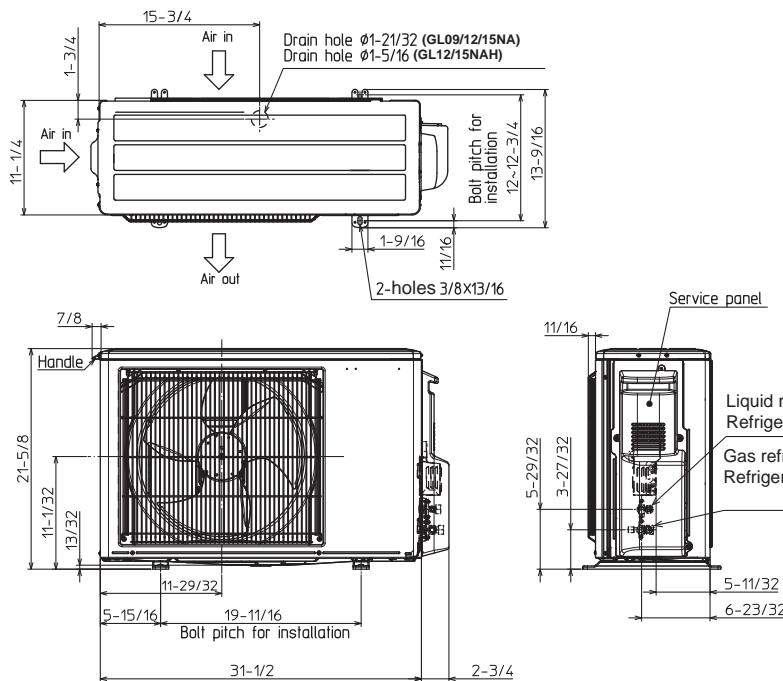
Unit: in. (mm)



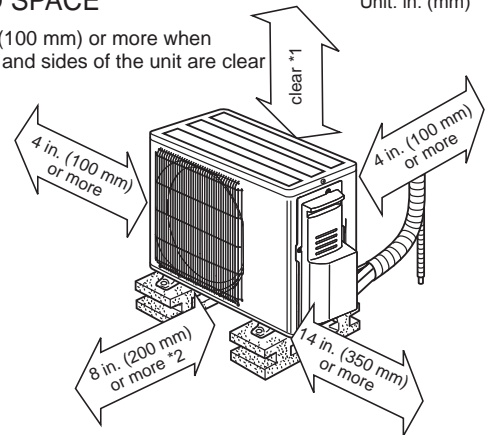
## MUZ-GL15NAH-U1

### REQUIRED SPACE

Unit: in. (mm)

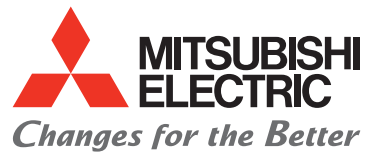


\*1 4 in. (100 mm) or more when front and sides of the unit are clear



\*2 When any 2 sides of left, right and rear of the unit are clear

Service panel  
Liquid refrigerant pipe joint Refrigerant pipe (flared) ø 1/4  
Gas refrigerant pipe joint Refrigerant pipe (flared) ø 3/8 (GL09/12) ø 1/2 (GL15)



for a greener tomorrow



Should this document be altered or changed without MESCA's permission, it becomes null and void. MESCA assumes no responsibility for any consequences in such cases.