

SUBMITTAL DATA: MSZ-GL12NA-U1 & MUZ-GL12NAH-U2
12,000 BTU/H WALL-MOUNTED HEAT PUMP SYSTEM

| | | |
|---------------------|--|-------|
| Job Name: | Location: | Date: |
| Purchaser: | Engineer: | |
| Submitted to: | For <input type="checkbox"/> Reference <input type="checkbox"/> Approval <input type="checkbox"/> Construction | |
| System Designation: | Schedule No.: | |



Wireless Remote Controller

ACCESSORIES:

Indoor Unit

Anti-Allergy Enzyme Filter (MAC-408FT-E)

Outdoor Unit

Windscreens (ME-FR-12-17)

Controls

- Wireless Controller (MHK1)
- Wired Remote Controller PAR-40MAA (Requires MAC-334IF-E)
- Thermostat Interface (PAC-US444CN-1)

Note: Mitsubishi Electric (MESCA) supports the use of only MESCA supplied and approved Snow Guard / Wind Deflectors / Windscreens and accessories for proper functioning of the unit(s). Use of non-MESCA supported Snow Guard / Wind Deflectors / Windscreens and accessories will affect warranty coverage.

SPECIFICATIONS:

| Rated Conditions (Capacity / Input) | | |
|-------------------------------------|-----------|----------------|
| Cooling ¹ | Btu/h / W | 12,000 / 920 |
| Heating at 47° F ² | Btu/h / W | 14,400 / 1,100 |

| Capacity Range | | Minimum | Maximum |
|-------------------------------|-------|---------|---------|
| Cooling ¹ | Btu/h | 1,500 | 13,600 |
| Heating at 47° F ² | Btu/h | 2,000 | 18,100 |
| Heating at 17° F ³ | Btu/h | - | 12,000 |
| Heating at 5° F ⁴ | Btu/h | - | 9,700 |

¹ Cooling | Indoor: 80° F (27° C) DB / 67° F (19° C) WB; Outdoor: 95° F (35° C) DB / 75° F (24° C) WB
² Heating at 47° F | Indoor: 70° F (21° C) DB / 60° F (16° C) WB; Outdoor: 47° F (8° C) DB / 43° F (6° C) WB
³ Heating at 17° F | Indoor: 70° F (21° C) DB / 60° F (16° C) WB; Outdoor: 17° F (-8° C) DB / 15° F (-9° C) WB
⁴ Heating at 5° F | Indoor: 70° F (21° C) DB / 60° F (16° C) WB; Outdoor: 5° F (-15° C) DB / 5° F (-15° C) WB
 * Rating Conditions per AHRI Standard.

| Operating Conditions (Indoor Intake Air Temp.) (Max./ Min.) | |
|---|-------------------------------------|
| Cooling ² | 90° F (32° C) DB / 67° F (19° C) DB |
| Heating | 80° F (27° C) DB / 70° F (21° C) DB |

| Operating Conditions (Outdoor Intake Air Temp.) (Max./ Min.) | |
|--|--------------------------------------|
| Cooling ⁵ | 115 F (46° C) DB / 14° F (-10° C) DB |
| Heating | 75° F (24° C) DB / -4° F (-20° C) DB |

⁵ Applications should be restricted to comfort cooling only; equipment cooling applications are not recommended for low ambient temperature conditions.

| AHRI Efficiency Ratings | |
|-------------------------|--------------------|
| SEER / HSPF / EER | 23.1 / 11.5 / 13.0 |
| COP at 47° F / 17° F | 3.84 / 3.1 |

| | |
|---------------------|-----|
| Energy Star® | Yes |
|---------------------|-----|

ENERGY STAR products are third-party certified by an EPA-recognized Certification Body.

| | |
|-------------------------------|----------------------------|
| Electrical Power Requirements | 208 / 230V, 1-Phase, 60 Hz |
|-------------------------------|----------------------------|

Minimum Circuit Ampacity (MCA) *

| | | | |
|------------------------|---|-------|----------------------------------|
| Indoor / Outdoor (RBS) | A | 1 / 9 | (15A - Recommended Breaker Size) |
|------------------------|---|-------|----------------------------------|

*** All electrical work shall comply with National (CEC) and local codes and regulations.**

| Indoor Unit | | |
|---------------------------|---------|-------------------|
| Blower Motor (ECM) | F.L.A. | 0.76 |
| Blower Motor Output | W | 30 |
| SHF / Moisture Removal | | 0.740 / 2.5 pt./h |
| Field Drainpipe Size O.D. | In.(mm) | 5/8 (15) |

| Outdoor Unit | | |
|-----------------|--------|--------------------------------|
| Compressor | | DC INVERTER-driven Twin Rotary |
| Fan Motor (ECM) | F.L.A. | 0.5 |

| Airflow Rate (Quiet - Lo - Med - Hi - Super Hi) | | | |
|---|-----|-----|---------------------|
| Indoor (Cooling) | DRY | CFM | 145-170-237-321-399 |
| | WET | | 109-134-201-286-364 |
| Indoor (Heating) | DRY | | 145-170-237-321-406 |
| | | | 1,229 / 1,172 |
| Outdoor | | | |

| Sound Pressure Level (Quiet - Lo - Med - Hi - Super Hi) | | | |
|---|---------|-------|----------------|
| Indoor | Cooling | dB(A) | 19-22-30-37-45 |
| | Heating | | 19-22-30-37-43 |
| Outdoor | Cooling | | 49 |
| | Heating | | 51 |

| External Dimensions | | |
|---------------------|---------|--|
| Indoor (H x W x D) | In.(mm) | 11-5/8 x 31-7/16 x 9-1/8 (295 x 798 x 232) |
| Outdoor (H x W x D) | In.(mm) | 21-5/8 x 31-1/2 x 11-1/4 (550 x 800 x 285) |

| Net Weight | |
|------------|----------|
| Indoor | Lbs.(kg) |
| Outdoor | 22 (10) |
| | 81 (37) |

| External Finish | |
|-----------------|--------------------------|
| Indoor | Munsell 1.0Y 9.2 / 0.2 |
| Outdoor | Munsell No. 3Y 7.8 / 1.1 |

| | |
|-------------|--------------------|
| Refrigerant | R410A; 2 lb. 9 oz. |
|-------------|--------------------|

| Refrigerant Piping (Flared) | | |
|---|---------|------------|
| Liquid (High Pressure) | In.(mm) | 1/4 (6.35) |
| Gas (Low Pressure) | | 3/8 (9.52) |
| Max. Total Refrigerant Pipe Length (Height Diff.) | Ft. (m) | 40 (12) |
| Max. Total Refrigerant Pipe Length (Length.) | | 65 (20) |

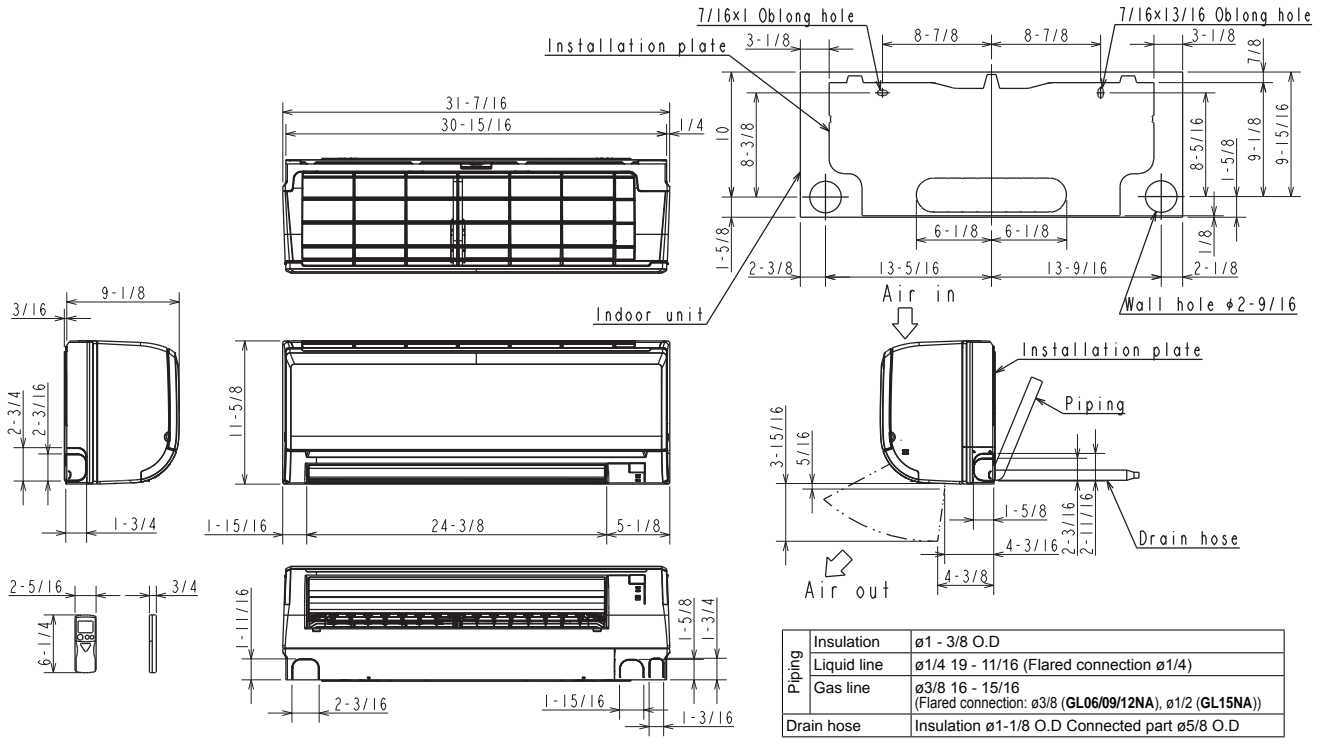
Should this document be altered or changed without MESCA's permission, it becomes null and void. MESCA assumes no responsibility for any consequences in such cases.

Specifications are subject to change without notice

DIMENSIONS: MSZ-GL12NA-U1 & MUZ-GL12NAH-U2

MSZ-GL12NA-U1

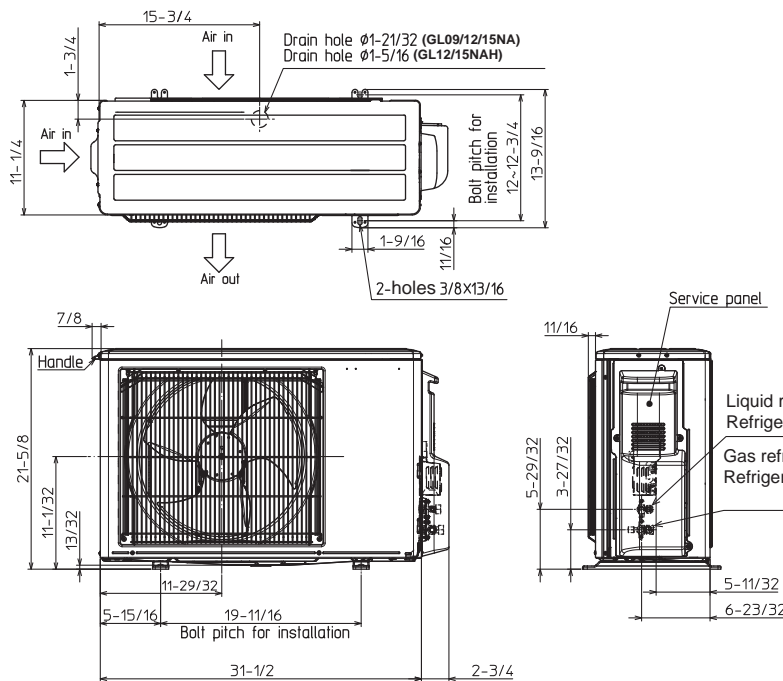
Unit: in. (mm)



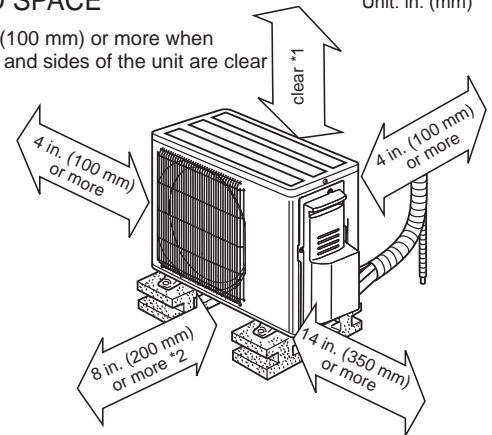
MUZ-GL12NAH-U1

REQUIRED SPACE

Unit: in. (mm)

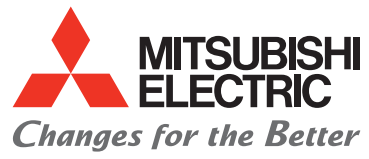


*1 4 in. (100 mm) or more when front and sides of the unit are clear



*2 When any 2 sides of left, right and rear of the unit are clear

Liquid refrigerant pipe joint
Refrigerant pipe (flared) ø 1/4
Gas refrigerant pipe joint
Refrigerant pipe (flared) ø 3/8 (GL09/12)
ø 1/2 (GL15)



for a greener tomorrow

